

# University Support Staff Workload Study

First of its kind in Ontario!

## We need your voice!

Are you a support staff member at an Ontario university? Your experiences matter. By sharing your experiences, you'll help us better understand the realities of your work which can help improve future advocacy for meaningful changes across the post-secondary sector.

## Purpose of the Study

To explore the workload and psychosocial hazards faced by university support staff and provide evidence to advocate for positive change.

## Why Participate?

- Make your voice heard on critical workload issues.
- Contribute to improving working conditions for all support staff.
- Help inform OSSTF/FEESO's advocacy efforts.
- Chance to win one of 10 \$50 gift cards.

## Confidential & Voluntary

- Your participation is entirely voluntary.
- Responses are confidential and anonymized.

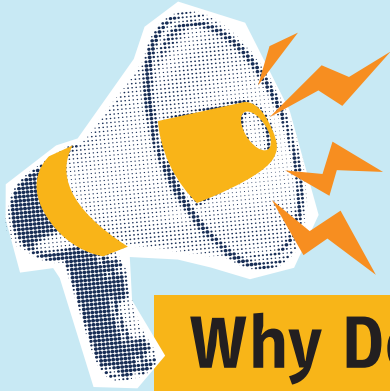
## Scan Here to Participate



[https://www.research.net/r/Ontario\\_University\\_Workload\\_Study](https://www.research.net/r/Ontario_University_Workload_Study)

Check your inbox, junk, or spam folders for your unique survey link.

For questions, contact your local Bargaining Unit, the Principal Investigator, Dr. Zendel, [adam.zendel@mail.utoronto.ca](mailto:adam.zendel@mail.utoronto.ca) or send an email to [pawel.mazurek@osstf.ca](mailto:pawel.mazurek@osstf.ca).



## Why Does Your Voice Matters?

Did you know?

- **Ontario invests 43% less per post-secondary student** than other provinces, ranking last in Canada.
- Since 2008, **100% of new operating income in Canadian higher education comes from international tuition fees.**
- **Chronic underfunding** has caused Ontario universities to **cut back on programs and services**, increasing workloads for support staff.

***Take action today by joining this vital study.***  
**Together, we can advocate for the support staff  
who keep Ontario's universities running.**



**BETTER** CAMPUSES, **STRONGER** COMMUNITIES  
**DE MEILLEURS** CAMPUS, **DES COMMUNAUTÉS PLUS FORTES**